

School District No. 58 COVID-19 Mandatory Protocol and On-site Etiquette ELEMENTARY



October 1, 2021

The British Columbia government is in Phase 3 of the Restart Plan for our province. School District No. 58 will be following all Health and Safety Protocols related to Stage 2 guidelines as provided by the Ministry of Education, WorkSafeBC, and the Provincial Health Officer.

School District No. 58 is committed to the safety and well being of all children and families through the development and implementation of mandatory protocols and on-site etiquette for returning to school.

Health and Safety Guiding Principles

No child should come to school if they are experiencing any symptoms or illness.

Children are to tell a staff member immediately if they begin to feel unwell during the day.

Children will be taught and supported in using correct coughing/sneezing procedures.

Children will be taught and supported in regularly washing or sanitizing their hands.

Children will be taught and supported in keeping a safe distance from one another and/or limiting touch.

Children will be taught and supported in practicing safe mask procedures should they choose to wear a mask.

Children will be taught and supported in moving in and around the school in a safe way.

Children will always be taught processes and supported in using them in a positive and reassuring way by caring adults in their school.

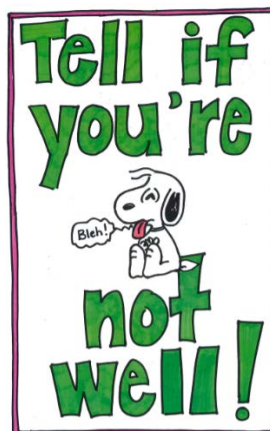
Children's wellbeing and mental health are a priority; support and resources will be offered to all students.

Arrivals

- *Parents must complete health assessment prior to arriving at school.*
- *Parents dropping off child(ren) must escort their child(ren) to their designated area as directed by principal.*
- *Parents are to remain outside of the building unless an appointment has been scheduled.*
- **All students, Kindergarten to Grade 7, must wear a mask indoors in schools and on school buses.**

Bus Students

- *A health check must be completed by parents before children board the bus.*
- *Upon boarding the bus, children will sit one per seat, if possible.*
- **Students, Kindergarten to Grade 7, must wear a mask while on board the bus.**
- *Students are to remain in their seats following all instruction provided by the bus driver.*



COVID-19 MANDATORY PROTOCOL AND ON-SITE ETIQUETTE

Hallways

- Children and staff must follow all hallway directions as provided by floor decals and signage.
- Children, Kindergarten to Grade 7, must wear a mask while indoors.
- Children should avoid crowding in common spaces.
- Everyone in the hallway with others will use the "Stop, Look, and Go" rule to move safely.

Classrooms

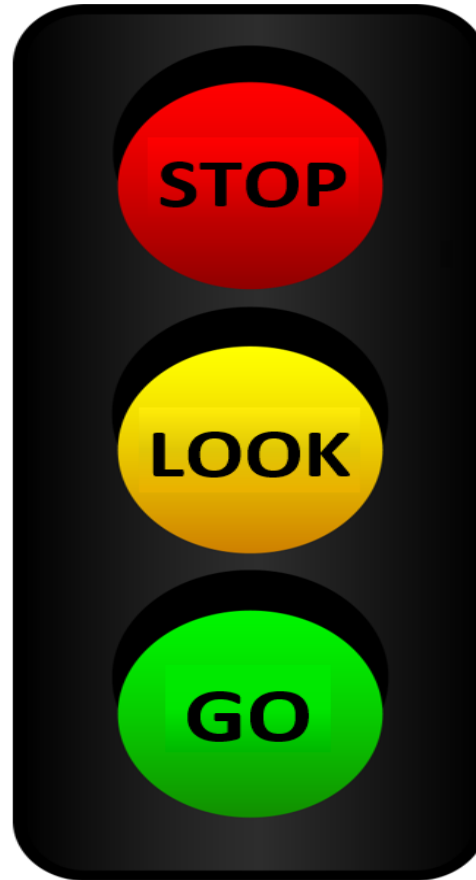
- There will be sinks or hand sanitizer available for use in every classroom.
- Coats and bags are to be kept on the backs of students' chairs or in designated areas.
- All students, Kindergarten to Grade 7, must wear a mask in the classroom.
- Safety protocols and practices will be clearly posted, taught, and regularly reviewed with all children at a developmentally appropriate and supportive way.

Lunch Hours

- Lunchrooms will be open and available for use.
- Children will have access to shared appliances for heating food. Assistance will be provided where necessary.
- Water fountains will reopen and available for use. Children are encouraged to bring their own refillable water bottle.
- Children should avoid sharing personal food.

Entrances

- Principals will determine the doors being used for entering and exiting for each class.
- Hand washing/sanitizing protocol must be followed at every entrance.
- Children and staff will follow all entry requirements before entering the building.



STOP:

Before doorways, hallways and intersections

LOOK:

Down hallways, at intersections and around corners.

****Wait****

GO:

When clear of traffic and safe to proceed.

****Always ensure proper distancing (6ft)****

Personal Measures

- Children are to remain at home when they are sick.
- Parents must follow the guidance provided by the K-12 Health Check app or 8-1-1.
- Parents must complete a daily health assessment following all district protocols.
- Children may return to school if their COVID test was negative or no test was required, their symptoms improve, and they feel well enough.
- Children may attend school when a member of their household develops symptoms provided they have no symptoms.
- Children can attend school if they have symptoms related to a previously diagnosed condition.

COVID-19 MANDATORY PROTOCOL AND ON-SITE ETIQUETTE

Washrooms

- Washrooms will be fully accessible and will no longer have staggering protocols in place.
- Children will be supported in follow proper hand washing guidelines after using the washroom and returning to class.
- Children will be supported by supervisors in maintaining safe behaviors before and after using the washroom.

Other Spaces

- Principals will develop protocols/processes for children when using other spaces in their schools (libraries, learning commons, gyms, shops, etc.).
- Children will always be supervised and supported in staying safe.

Front Office

- Parents and caregivers can phone or email the front office at any time should they require any assistance.
- Messages will be regularly monitored in order to support families.
- Parents and visitors may make an appointment should they require access to school buildings.

End of Day

- Children will exit the building as directed by their principal or teacher.
- If parents need to pick up their child(ren) early, contact the front office and arrangements will be made.
- Children who wait for bus pick up will be supervised and supported in staying safe.

