

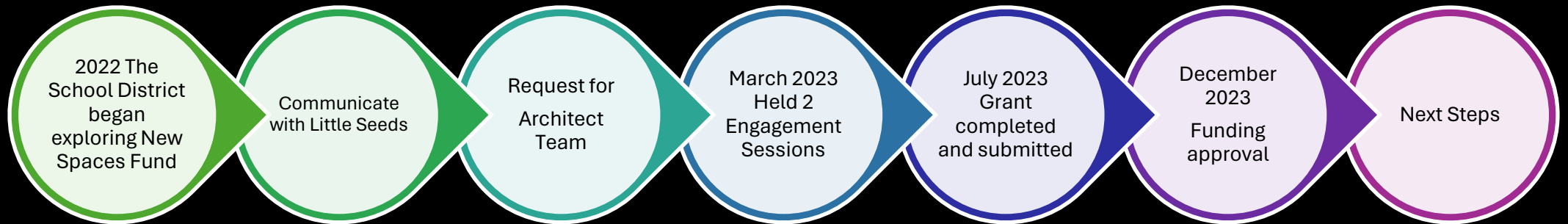
Riverside Learning Center

An aerial architectural rendering of the Riverside Learning Center. The image shows a large complex with several buildings. A large rectangular area in the upper left is outlined with a dashed pink line and labeled 'RENO'. A smaller area to its right is also outlined with a dashed pink line and labeled 'RENO'. A central building is outlined with a dashed pink line and labeled 'NEW'. A small area to the right of the central building is outlined with a dashed pink line and labeled 'RENO'. A large red building is on the right side. A smaller white building is in the lower center, labeled 'NEW'. The complex is surrounded by a parking lot, trees, and a fence. The title 'Riverside Learning Center' is in the top left corner.

The Journey

- The ChildcareBC New Spaces Fund supports the creation of licensed child care spaces, aiming to increase the access to quality, inclusive child care throughout BC.
- In talks with Little Seeds, and consultation with the 2021 Childcare Needs Assessment, we understand that there are current needs not being met (due to wait lists and available spaces). We have also identified projected needs.

Timeline

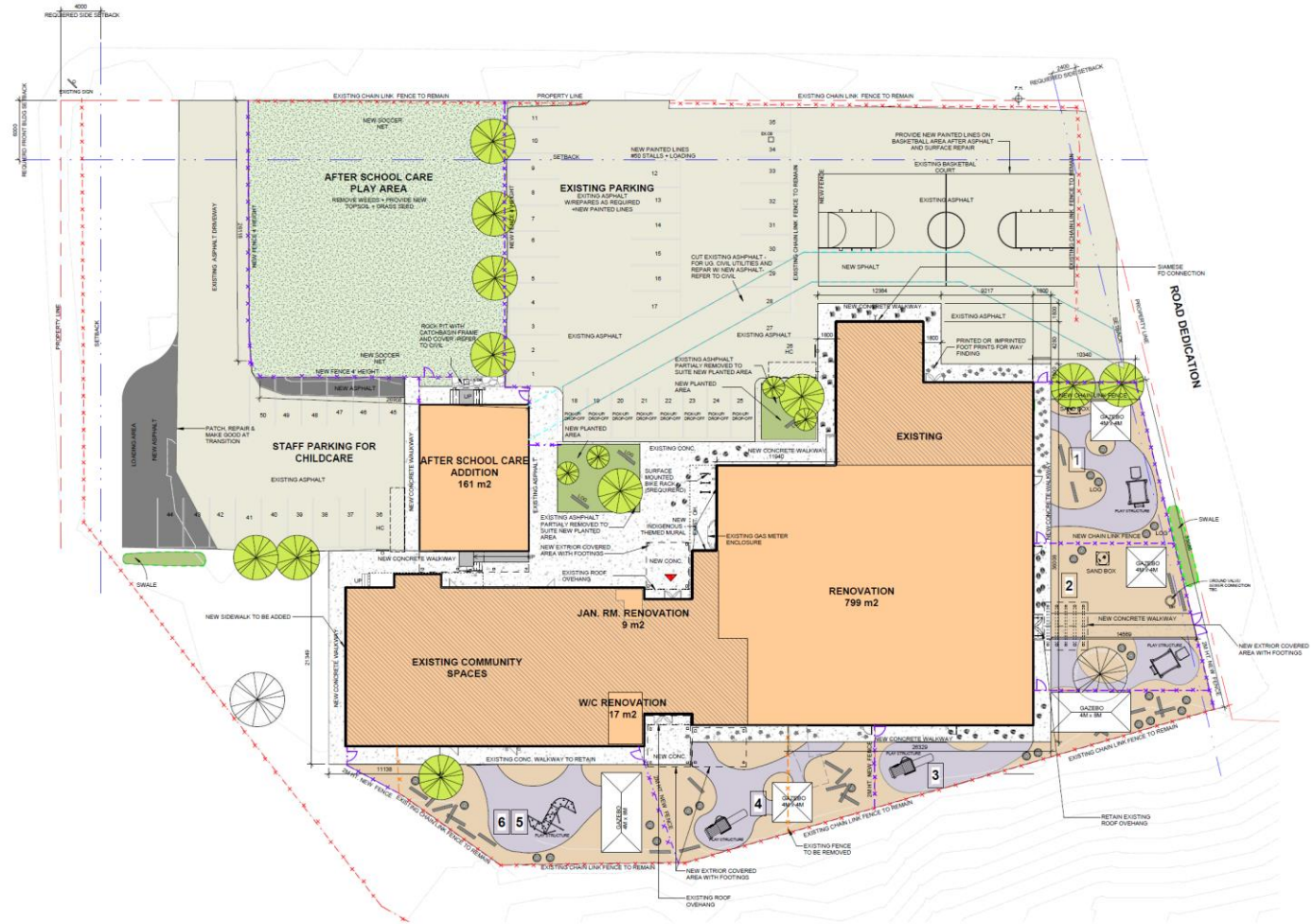


Funding

- As a result of this process the district has secured funding from the Ministry of Education and Childcare for almost 10.3 million dollars.
- This joint federal and provincial investment will allow the School District to create 80 new child care spaces while also providing for the upgrade of 42 existing child care spaces that will continue to be available for families while renovations and new construction takes place. This will result in 122 total child care spaces.
- This project will:
 - Renovate and create new spaces.
 - Enhance and create new outdoor play spaces.
 - Work to support a child care facility that has flow, accessibility and child care needs in mind.
 - Create an addition that will be used for the Before and After School Care program.

Some Highlights

- Added and expanded outdoor play space.
- Addition for before and after school care.
- Design focused on childcare and with age-appropriate designs in place.
- Increased natural light (sky lights and doors).
- Landscaping that includes local and Indigenous plants.
- Welcoming and revamped front entrance.
- Covered areas for ease of access and opportunities to stay protected from inclement weather.
- Walkway around the building.
- Parking redesigned/rerouted to support safety in drop off and pick ups.
- Pickle Ball spaces will not be altered and will still be available for community use.
- Theatre space will still be accessible for community use.




- Soften the exterior look
- A welcoming and accessible entrance
- Added landscaping to reflect the area
- Added green space and outdoor play spaces




- The flow of traffic will also be more conducive to drop offs and pick ups of littles - with safety in mind.
- An addition that will house the before and after school program with covered entrances, access to the gym space through covered walkways with stair and ramp access as to enhance accessibility.

Some of the proposed play structures that we hope to include will use natural elements, softer surfaces and features that are conducive to the weather.

4	3	3-5 YEAR GROUP PLAYGROUND PROPOSED PROPOSED PLAY STRUCTURES
---	---	-------------------------------------------------------------



6	5	BEFOR/AFTER SCHOOL PLAYGROUND PROPOSED PROPOSED PLAY STRUCTURES
---	---	-----------------------------------------------------------------



ISSUED FOR UPDATE TO/CLASS.C

NEW OUTDOOR SURFACES, GENERAL

RUBBER SURFACE



CONCRETE



GAZEBO



PLANTED AREA



PRINTED OR IMPRINTED FOOT PRINTS FOR WAY FINDING



PLAYGROUND NATURAL ELEMENTS, GENERAL



Guiding Principles

To meet the community and school needs while also reflecting the makeup of the parents and children it will serve.

It is our goal to ensure that the land and territories that we reside will be reflected in the build.

We are committed to additional engagement sessions to ensure we move forward in a good way by continuing to get input from the community that this child care facility will serve.

Next Steps

- Architects, trade consulting engineers and district staff are currently working on the detailed design to develop construction drawings.
- Engage construction management services.
- Develop plans to have another community engagement meeting to identify status and seek feedback/input.
- Prepare documents for the building permit application process.
- Develop strategies for continuous child care services.

Thank-You

We are happy for the children and families of Princeton who will benefit from this wonderful opportunity.

We extend thanks both the Provincial and Federal Governments for their investments for helping to fund our 122 licensed child care spaces.

Additional thanks go out to The Town of Princeton, our community partners, Little Seeds Early Learning Centre and the YMCA who have all supported the district throughout the successful grant proposal process.