

## Re: Further Clarification - French Immersion Bussing



Dear Parents/Guardians,

It has come to our attention that some parents are still confused about bussing to Collettville.

The province of British Columbia discontinued its core funding mandate for K–12 school bus services over two decades ago, as part of broader budget cuts. This policy change shifted the responsibility for funding student transportation to individual school districts.

We continue to advocate with the Ministry to make bussing a core service for rural communities.

The board heard concerns from rural parents, especially, and agreed to provide a transfer bus for students beyond the walk limits to their neighboring or catchment school.

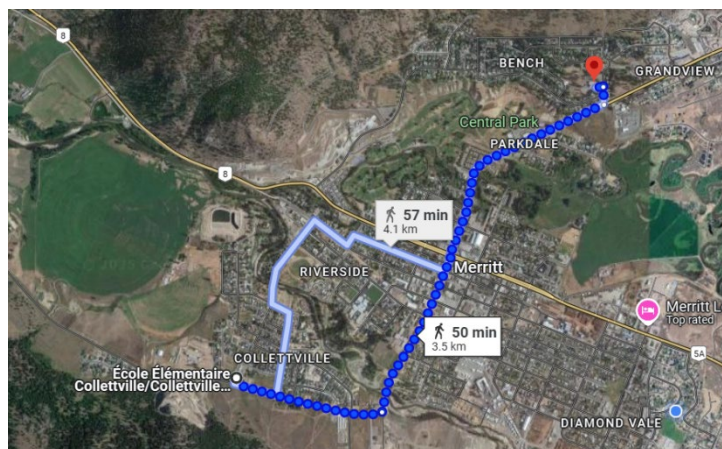
Here is an example in practice: if a student lives on the Bench, their neighbourhood school is Bench Elementary. If you draw a radius of 4 km Primary / 5 km grades 4 - 12 from Bench, those outside the circle would be eligible for bussing to Bench; those within the circle would be within the walking limit and bussing would not be provided. This provides a pretty good estimate, taking into account that the catchment boundaries are not a uniform circle.

If a student at Three Eagles wanted to attend Nicola Canford, that would be a school of choice, as the neighbourhood school is Bench Elementary, and they would therefore be responsible for their own transportation to Nicola Canford. The same applies to Collettville as a school of choice. The District buses students beyond the 4 / 5 km walk limit.

If you use google earth and map out actual road distances from school-to-school walking is only 3.5kms. Just a reminder that our Maintenance measures from home to catchment school not from home to the school a student chooses to attend.

### **This aligns with the Ministry information on transportation:**

For students who wish to enrol in a French Immersion program, provincial transportation funding is based on the distance between a student's residence and the closest school in which there are appropriate grades, whether or not that school offers French Immersion.



We realized the catchment document had mislabelled Collettville as a catchment school. That is our error. We apologize for not updating the document sooner. Collettville became a school of choice when it was no longer dual track.

Our policy on French Immersion and our registration forms state that French Immersion is a school of choice. The catchment document should have made this clear and it did not get updated in a timely manner.

We updated the catchment document today to help parents figure out their neighborhood or catchment school. Originally, we were not going to update until July 1, 2025, but we wanted parents to be able to determine if they qualify for bussing or not.

We hope this will help parents to understand.

Please call and speak to Melissa Robinson in transportation if you need additional help in determining your catchment school based on your home address.